

3] ASSEMBLY OF LATHE TAIL-STOCK

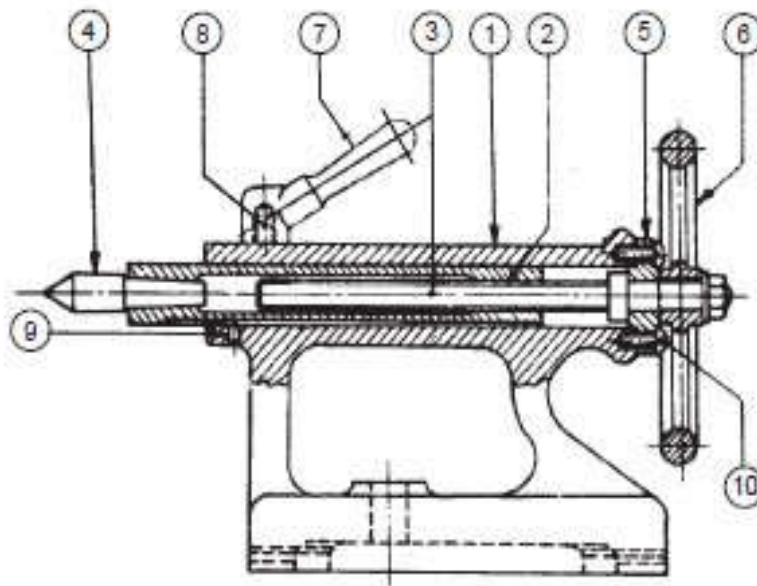
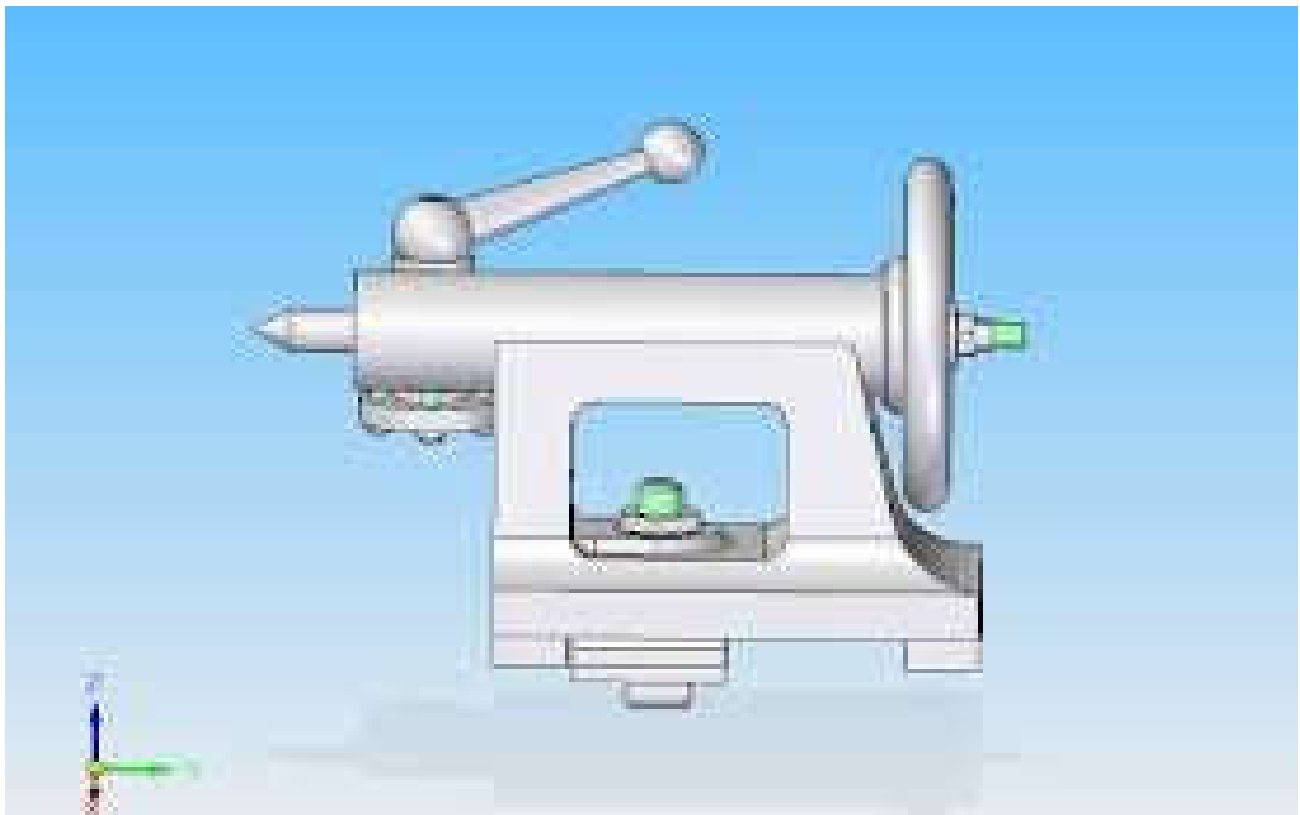


Fig. 18.18A Lathe tail-stock

Parts list

Part No.	Name	Matl	Qty
1	Body	CI	1
2	Barrel	MS	1
3	Spindle with washer & nut	MS	1
4	Centre	CS	1
5	Spindle bearing	CI	1
6	Hand wheel	CI	1
7	Clamping lever	MS	1
8	Stud	MS	1
9	Feather key	MS	1
10	Screw	MS	4



3] DETAILS OF LATHE TAIL-STOCK

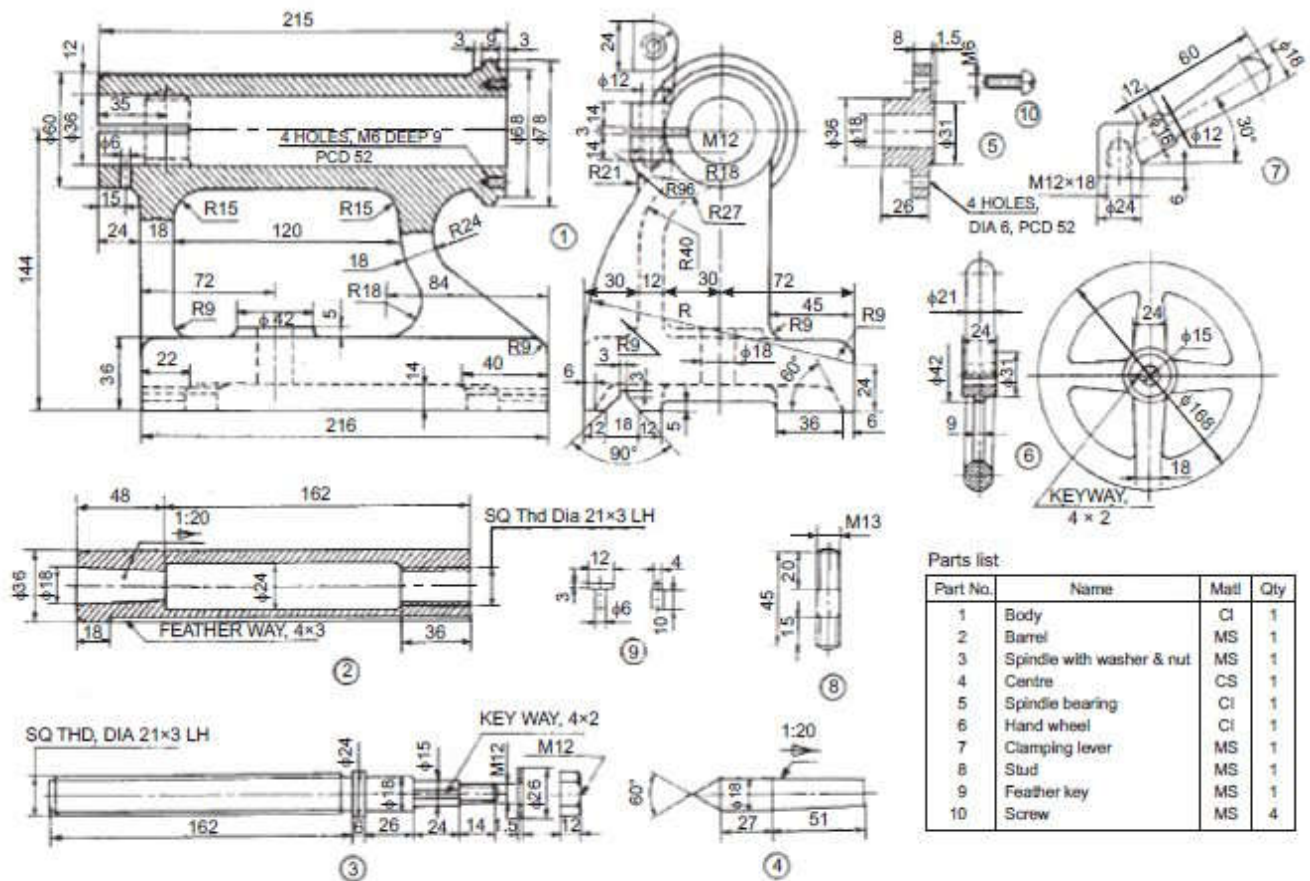
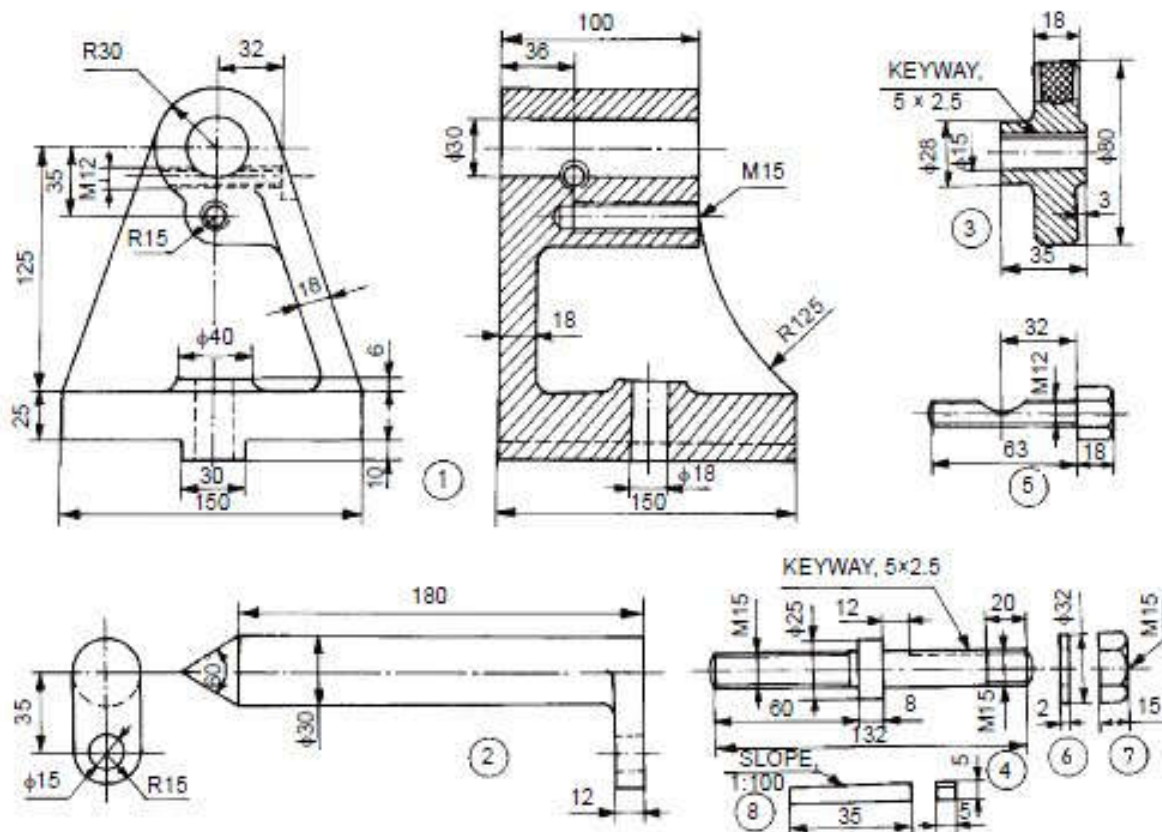


Fig. 18.18 Lathe tail-stock

Part No.	Name	Matl.	Qty.
1	Body	CI	1
2	Centre	Case hardened alloy steel	1
3	Hand wheel	Cast steel	1
4	Screw	MS	1
5	Screw	MS	1
6	Washer	MS	1
7	Nut	MS	1

8] DETAILS OF MILLING MACHINE TAIL-STOCK



Parts list

Sl. No.	Name	Matl.	Qty.
1	Body	CI	1
2	Centre	Case hardened alloy steel	1
3	Hand wheel	Cast steel	1
4	Screw	MS	1
5	Screw	MS	1
6	Washer	MS	1
7	Nut	MS	1
8	Key	MS	1

Fig. 18.19 Milling machine tail-stock

11] DETAILS OF FEED CHECK VALVE

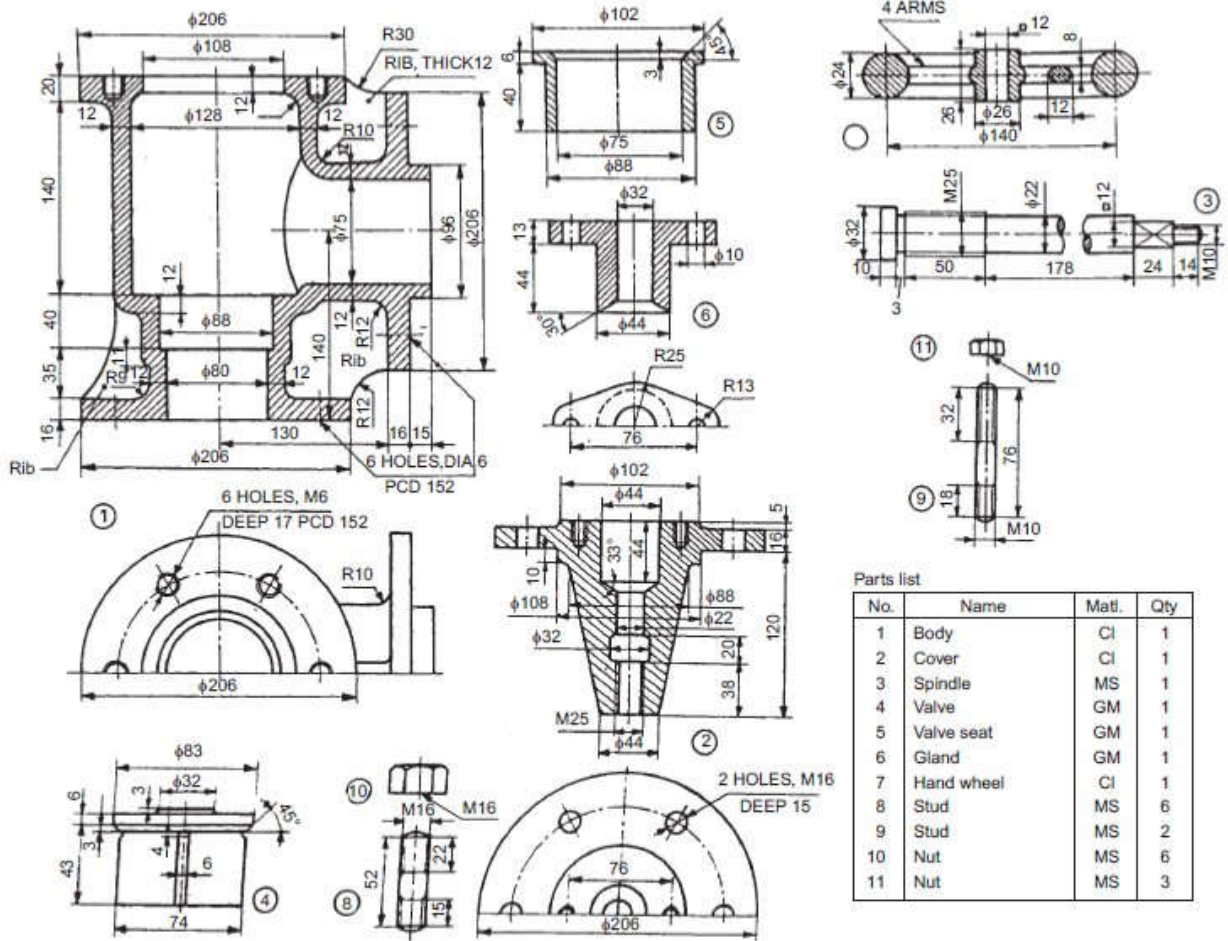
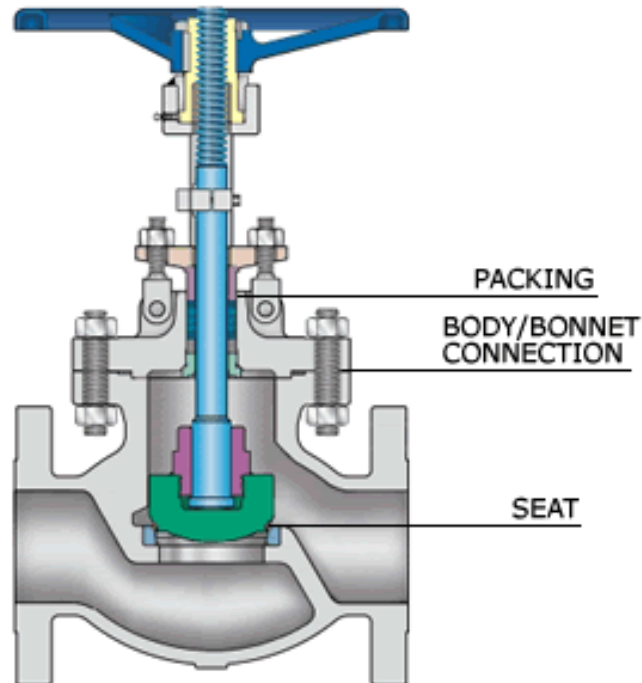


Fig. 18.34 Feed check valve



12] ASSEMBLY OF PRESSURE RELIEF VALVE

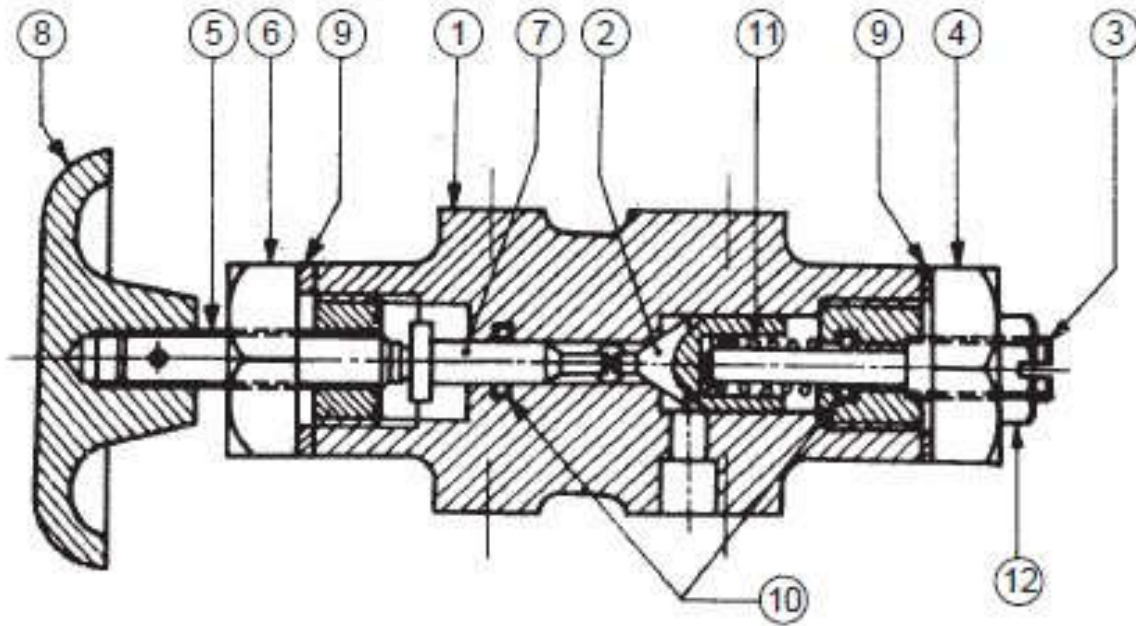


Fig. 18.35A Pressure relief valve



18] ASSEMBLY OF SPRING LOADED RELIEF VALVE

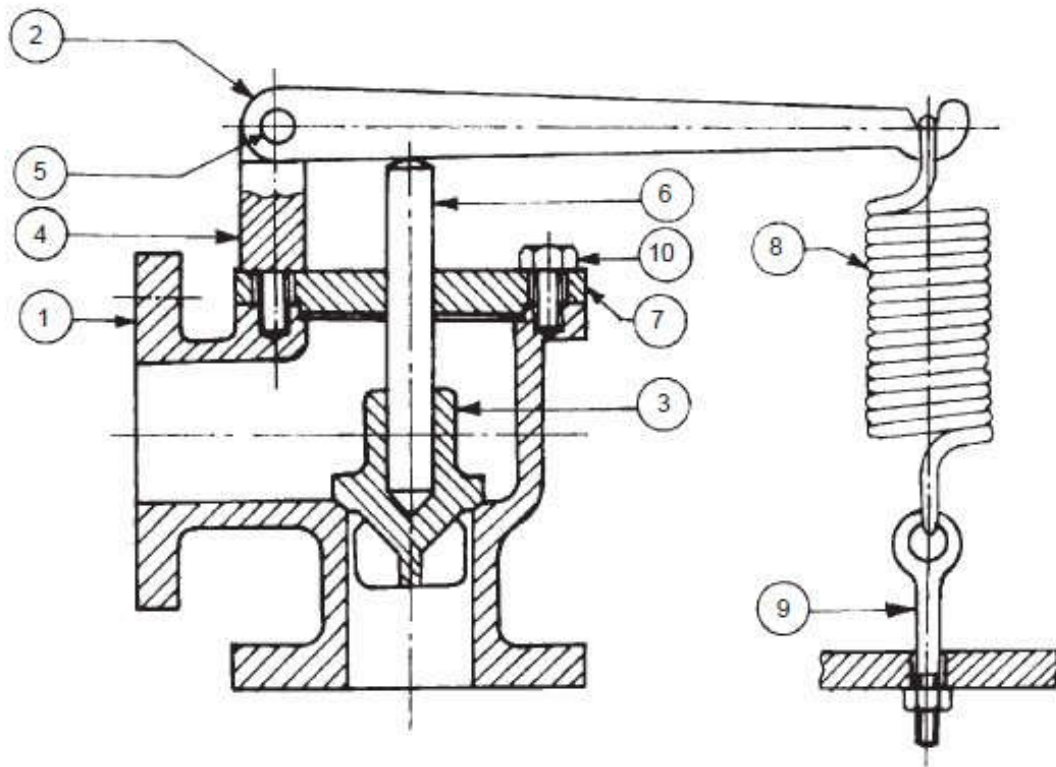
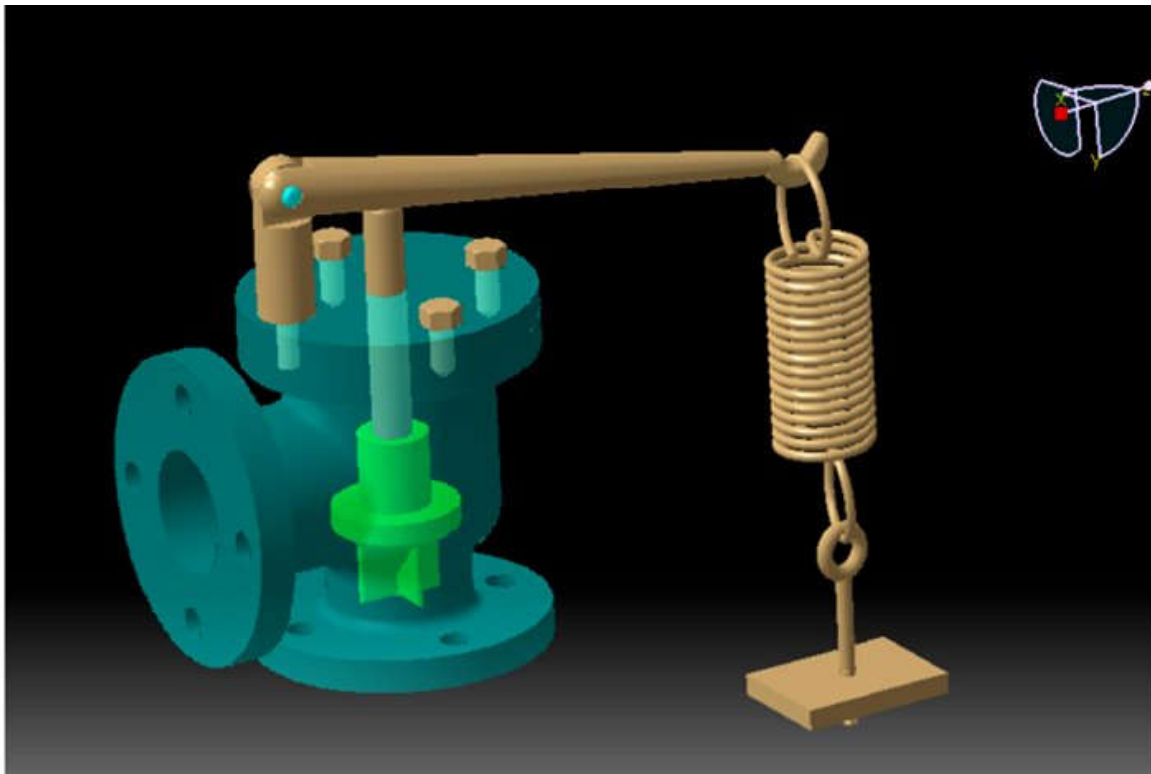


Fig. 18.37A Spring loaded relief valve



Parts list

Sr. No.	Name	Matl.	Qty.
1	Valve body	CI	1
2	Lever	MS	1
3	Valve	GM	1
4	Fulcrum bolt	MS	1
5	Fulcrum pin	MS	1
6	Stem	MS	1
7	Flange	CI	1
8	Tension spring	HCS	1
9	Tension adjusting bolt with nut	MS	1
10	Screw	MS	3

Fig. 18.37 Spring loaded relief valve